



# **Style Research**





# **Art styles**



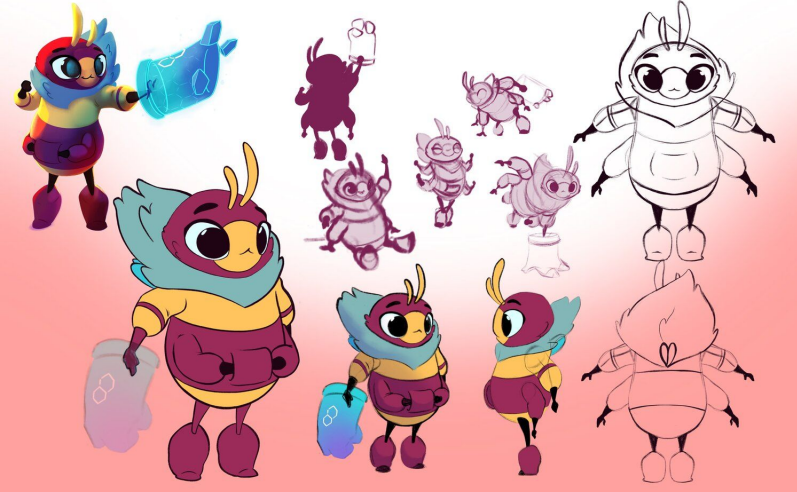


Picture:  
<https://brookeseggleston.com>

## Brookes Eggleston

I would like to make my work have a similar style as Brookes Eggleston as I think his way to make characters look very unique is a great character style and I really love his use of shapes in his work to make everything work in unison with the characters personalities.

The use of colour is essential to building the art for animating as the colour is the main factor for building my characters as the colours is how the shape are built to make them to become alive.





# Unknownspy

I would love to make my work have a similar style as Unknownspy as I love the use of thick and thin lines on characters and unique use of oddly designs to blend characters personalities.

The use of colour is essential to building the art for animating as the colour is the main factor for building my characters as the colours is how the shape are built to make them to become alive.

Images: <https://twitter.com/Inkhandprint>



**character**





# Voice 1

I visualize for the voice 2 to be a elf bunny answering question. I them wearing a hoodie, shorts, tights, booties :



- Big eyes
- Marking on the face
- Pointy ears
- Thick eyebrows
- A big afro
- Simplistic hands

# Voice 1 design



#3EC4BD

#3CB595

#001214

#A46434

#E1A257

Color is essential for eye catching animations. It brings life to characters adds vibrancy and dynamism to their personalities.

With this in mind I chosen Analogous bright colours with darker colours as without the right hues of colours lack impact and fail to stand out.